

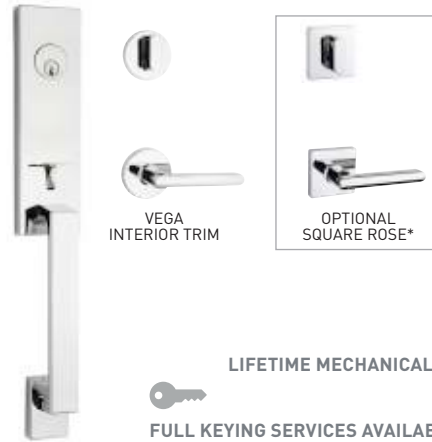
Taymor

PRODUCT SPECIFICATIONS

THE PREMIER LONDON HANDLESET

SPECIFICATIONS

- UNIVERSAL 6-IN-1 LATCH: DRIVE IN, SQUARE MORTISE AND RADIUS CORNER WITH ADJUSTABLE BACKSET: 2-3/8" (60 mm) - 2-3/4" (70 mm)
- INCLUDES ANTI-PRY COLLAR FOR REINFORCED SECURITY
- HIGH TENSILE STEEL ANTI-SAW DEADBOLT WITH 1" THROW
- STANDARD CENTER TO CENTER BORE DISTANCE: 5-1/2" (140 mm)
- STANDARD BORE HOLES: 2-1/8" (54 mm) ALSO FITS SMALL DEADBOLT BORE: 1-1/2" (38 mm)
- FITS STANDARD EXTERIOR DOOR THICKNESS: 1-3/4" (45 mm)
- FULL LIP RADIUS CORNER SPRING LATCH STRIKE WITH ADJUSTABLE TAB
- HIGH SECURITY DEADBOLT STRIKE



GRADE 2

ANSI GRADE 2

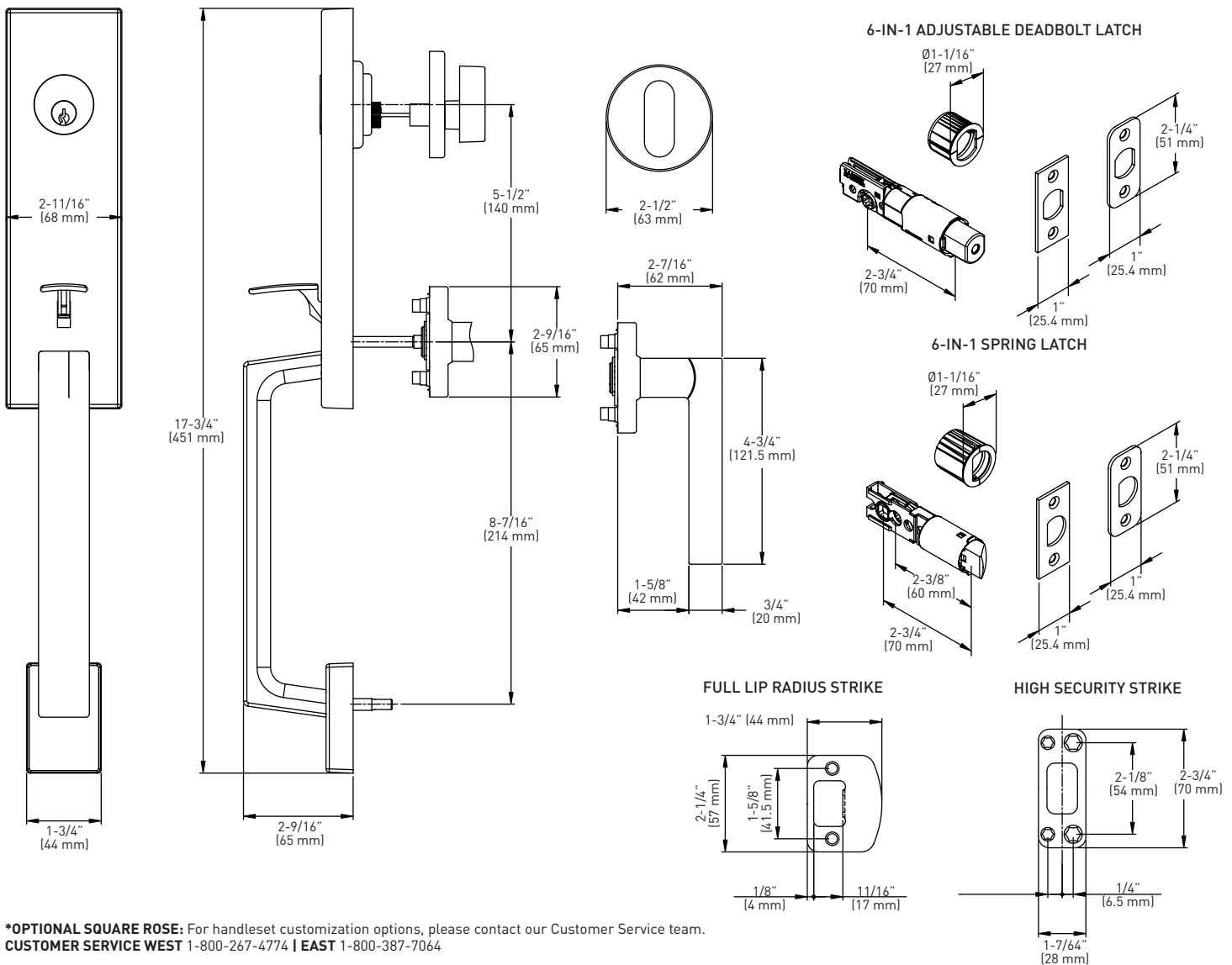


LIFETIME MECHANICAL & FINISH WARRANTY



FULL KEYING SERVICES AVAILABLE

WR5 keyway, packaged in Keyed Different.



*OPTIONAL SQUARE ROSE: For handleset customization options, please contact our Customer Service team.
 CUSTOMER SERVICE WEST 1-800-267-4774 | EAST 1-800-387-7064

PACK TYPE	SATIN NICKEL 15	MATTE BLACK 19	POLISHED CHROME 26	SATIN CHROME 26D	CASE QTY
BUILDER PACK	30-D1015SN	30-D1015BLK	30-D1015PC	30-D1015SC	4
RETAIL PACK	31-FV1015SN	31-FV1015BLK	-	-	4

MEASUREMENTS SUBJECT TO A 3% VARIANCE

MEASUREMENTS ARE FOR REFERENCE ONLY. TAYMOR RESERVES THE RIGHT TO CHANGE THE PRODUCT SPECS WITHOUT NOTICE. FOR PRODUCT WARRANTY, PLEASE VISIT TAYMOR WEBSITE FOR DETAILS

© TAYMOR INDUSTRIES LTD. | JANUARY 2021 | taymor.com
 CUSTOMER SERVICE WEST 1-800-267-4774 | EAST 1-800-387-7064

